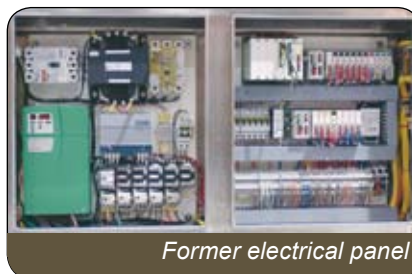


MP Heavy-Duty Former

OUR MP HEAVY-DUTY STAINLESS STEEL FORMER FEATURES THE OPTIONAL PATENTED MULTI-FLOW® SYSTEM FOR HIGHER PRODUCTION YIELDS

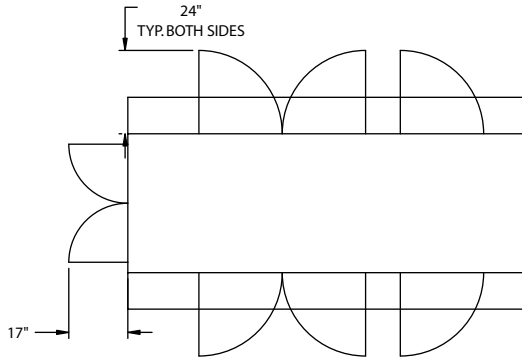
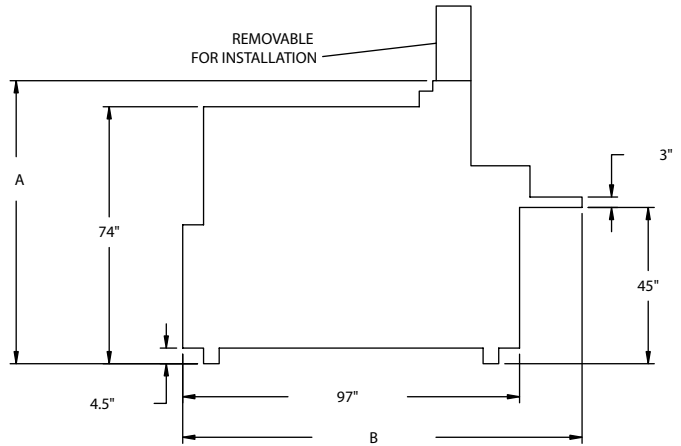
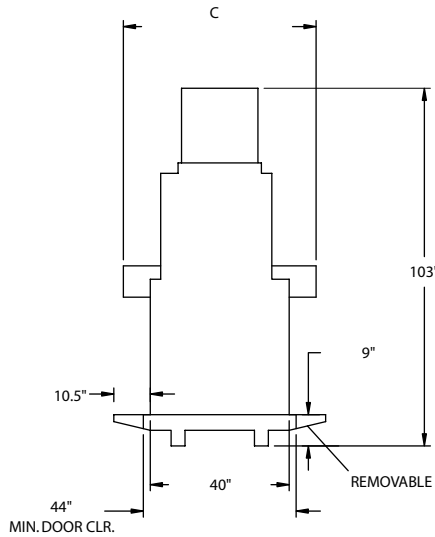
- Patented Multi-Flow®
- Heavy duty Winsmith, connecting drive, KO drive, and feed screw system standard
- Stainless steel package standard
- Improved door seal system
- Stainless steel hydraulic reservoir standard
- Touchscreen with PLC controls and optional
 - left hand controls
 - wireless communication system for remote monitoring, trending, reporting, etc.
 - customized to operator's specifications
- OPTO 22 Standard
- Allen Bradley optional
- Tomahawk/Certified MP Former parts for sales and rebuilds
- Rebuild Formax® program



MP Heavy-Duty Former
Technical Information

MACHINE SPECIFICATIONS

Machine	A	B	C
26" Former	81.5"	115"	55.5"



UTILITIES (26" FORMER)

Power/Voltage	50 Hz/380, 420 or 575 3 Phase/32 kVA Service	60 Hz/200, 230 or 460 3 Phase/20 kVA Service	NEMA 4 Circuit Breaker
Stroke Length	9" or 10"		
Water	1 GPM/4.5 Liters/minute	Jacketed Oil Cooler	
Heavy Duty	Feed Screw Housing	Feed Screws	Over Arm
Sanitation	Upper Right Angle	Stainless Steel	
Consideration	Drive Stainless Steel	Hydraulic Reservoir	
Comments	8200 Pounds Per Hour Touch Screen Interface Adjustable Speed 15-90 Strokes Per Minute Single Piece Aluminum Billet Feed Screw Housing Gross Weight: 7600 lbs/3447 kgs W/O Paper Feed 8100 lbs/3674 kgs		

Specifications subject to change

- SERVICES OFFERED -

- 24/7 Service
- Spare Parts Department
- Application Support
- Technical Support
- Line Audits

- MP WARRANTY POLICY -

MP Equipment will repair or replace any MP manufactured component that fails due to defect in material or workmanship within 24 months from shipment.

All OEM parts covered by individual warranties.

MP EQUIPMENT
 COMPANY
Your Best Value for Processing Solutions